

The 144 MHz EME NewsLetter

©DF2ZC

...since 2003

www.df2zc.de



Issue 6/2016 12 Jun 2016

Portable EME from Menorca (EA6 Balearic Islands)



EA6/PA2CHR working from JM29BV

Chris PA2CHR is a very experienced EME ham, not only from his home QTH in JO32DB but also from mobile/portable locations on DXpeditions. Past May he was QRV from EA6 activating the very much sought grid squares JN10, JN20 and JM29. Back in 1998 and 2000 he had already spent holidays on Menorca island together with his family and then he also made a number of meteor scatter contacts from those three rare squares. Since his last stay there had been only a short DXpedition to that Island as far as he know. So there was a good reason visit these three (relatively most wanted) locators again.

This time Chris went by car because of all the equipment for three different frequencies, PA's needed and also for having a place to sleep. Equipment used was a IC7100 with Beko and Italab PA (as a spare). For this and future trips Chris had built a new 13 ele yagi as a X-pol, so a total of 26 elements with 14,5 dBd gain for 2 m. This antenna worked very well.

After 12 days being QRV from the three different locations the results on 2 m are:

JN20CA: 126 EME QSO's, 65 MS QSO's and about 35 Tropo QSO's

JN10WB: 109 EME QSO's, 80 MS QSO's

JM29BV: 114 EME QSO's, 61 MS QSO's

Besides 2 m Chris was also QRV on 70 MHz and 70 cm, the latter also on EME: A few weeks before he left, OK1DFC had asked if it was possible to become QRV also on 70 cm. So Chris brought a 21 elements yagi, a 400 W PA and indeed completed 14 EME QSOs on that band from JM29BV.

Total operating time was about 130 hours and 14 hours were needed for setting up and taking down of the antennas etc. The perfect Honda generator ran for 140 hours and used only 180 liters of petrol for this.



Setup in JN20CA, 4 m and 2 m. (Photos PA2CHR)

Yet another portable activity from Australia

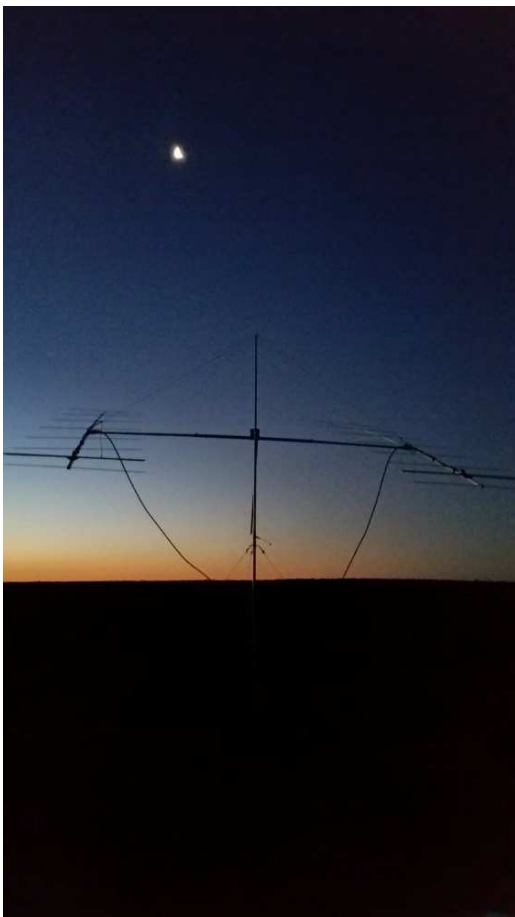
We all know Wayne is an avid EME DXpeditioner who has already made a good number of rural areas and the corresponding grid squares enter the 2 m EME log of many hams. His most recent work commitments made him travel to Broken Hill past April. That town is an isolated mining city in the far west of outback New South Wales, located in QF08. It is rather close to the QF07, 08, 17, 18 intersection. As Wayne was there for only two days/ moon passes and because he had previously activated QF07 and QF08 he planned for QF17 and QF18 that visit.

Before travelling to Broken Hill Wayne had to do some work in Renmark (QF05it). Hence he was also QRV from that grid square on April 11th. In just a few hours he managed to work 27 EME stations in 15 DXCC and 1 WAC, plus 1 local VK. However, he suffered from extreme drift in his radio. This was

rather unusual as it had never happened before. As a result he saw many syncs in the FFT display which would not decode. Moreover there were some callers he had decoded but yet could not complete the QSO. At times there were 20+ traces on the screen.



The car boot shack in QF05.



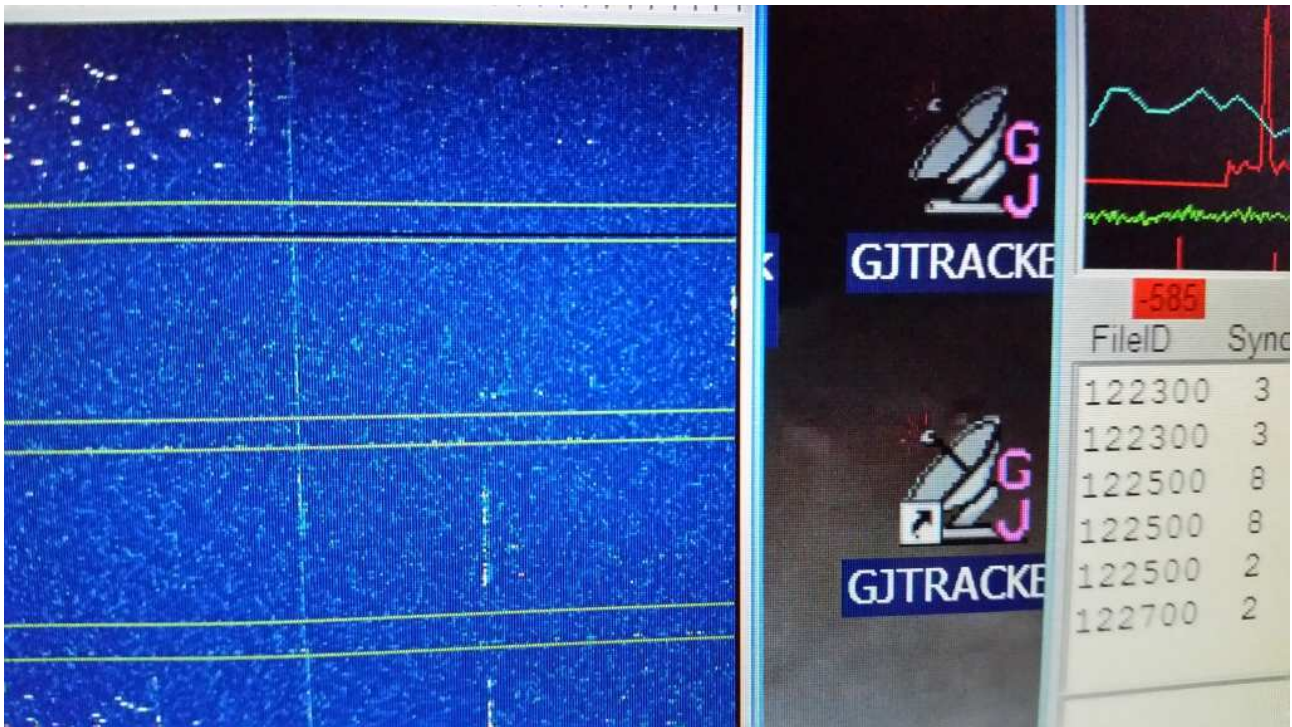
The next activity took place from QF06IA on the 12th, a major grid which is very rare even by Australian standards. As usual when he is travelling Australia for work, Wayne sacrificed his free time (and also sleeping time) to moon bouncing. Luckily he had managed to repair the external Hi-stability oscillator for his IC706MK2. The results speak for themselves: in a nutshell: no drift = more QSO's.

This time he managed to work 35 EME stations in 16 DXCC and 3 WAC, plus 1 local VK.

The following activity was from QF17AT, a place that remote that there's not even mobile phone coverage. Wayne obtained his PC Clock timing via a Garmin 60C GPS unit and used the NMEA TIME software to set the PC timing. From that location VK5APN managed to work 27 EME stations in 14 DXCC and 3 WAC.

Picture left: A stunning view from a lonely place (QF06IA80) shortly after sunset, with antennas on the moon in the outback.
(All photos VK5APN)

However, the drive from the previous grid square to that one was about 300 km on lonely roads without much distraction: straight road, flat country and not much to see. As the moon was later in the night (local) the setup had to be performed in the dark.



Screen shot from QF17: One person was calling very optimistically high...yes, it was DF2ZC ;-) and it was by mistake.

At the time Wayne arrived back at the motel and was able to fall asleep, he experienced a restless night (other motel occupants were making noise running water etc) followed by a busy day at QRL. Therefore he decided it was not wise to venture out to QF18, finish really early in the morning and have a few hours sleep to then drive 7 hours back home. Hence Wayne had to cancel QF18. There will always be a next time, he writes. Without doubt – with somebody as dedicated as Wayne to put rare grids on moon...

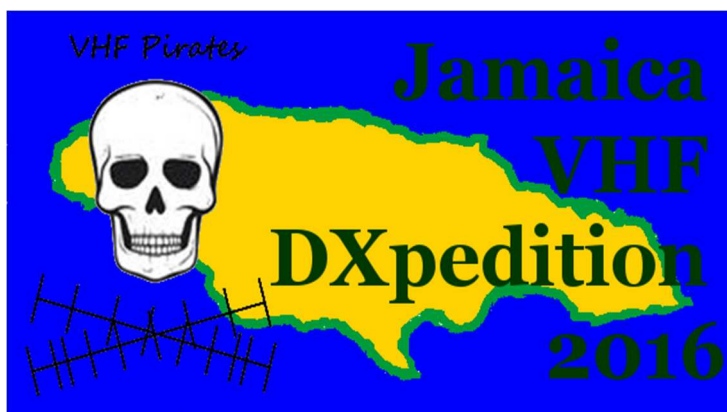
ARRL Contest Survey

In preparation of his presentation at EME 2016 in Venice in August Rick K1DS has drafted a survey focusing on the ARRL contests: <https://www.surveymonkey.com/r/PR5SMB2> The survey is still open until the end of June.

Upcoming DXpeditions

For more information on current and upcoming DXpeditions please have a look at www.mmmonvhf.de from where most of the information here was gathered.

SW8YA: Gabi HA1YA will be on holiday in Corfu at the Catamaran hotel Acharavi (**JM99VT**) from 13th to 23rd July. For 2 m he will bring a 10 elements DK7ZB yagi and put it on the roof of the hotel. With very short cable and good power he will try some EME during moon-set.



6Y5EME: This year the newly formed radio group “VHF Pirates” will be QRV from Jamaica. The QTH will be in FK18 at the Northern side of the island. Operators are: AA7A, K2KW, N6CW, N7CW, W4KXY and WO7R. The 2 m EME station consists of 4 times 9HX9V cross pol array and full power. Since this is a combined vacation (with xyls) and radio DXpedition, the radio part of the trip will start on 28 June and end on 5 July.

Time Table

- 4 July** July issue of the 144 MHz EME NewsLetter ready for download at <http://www.df2zc.de>
- 19 – 21 Aug** 17th International EME Conference, Venice/Italy www.eme2016.org

The 144 MHz EME NewsLetter

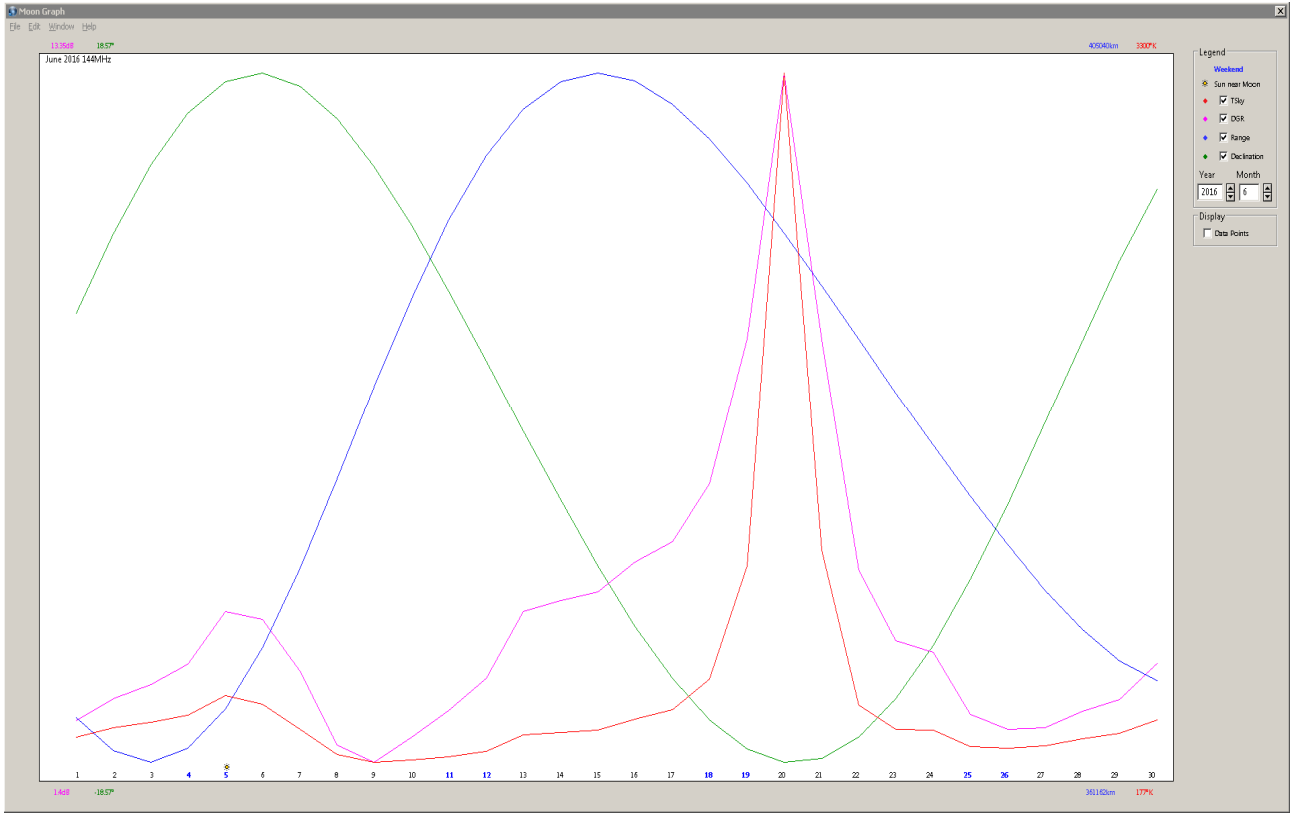
has been produced monthly since 2003.
Copyright Bernd J. Mischlewski, DF2ZC.

Permission to quote or reprint material from the newsletter is granted under the condition that it is only for non-commercial, personal use.

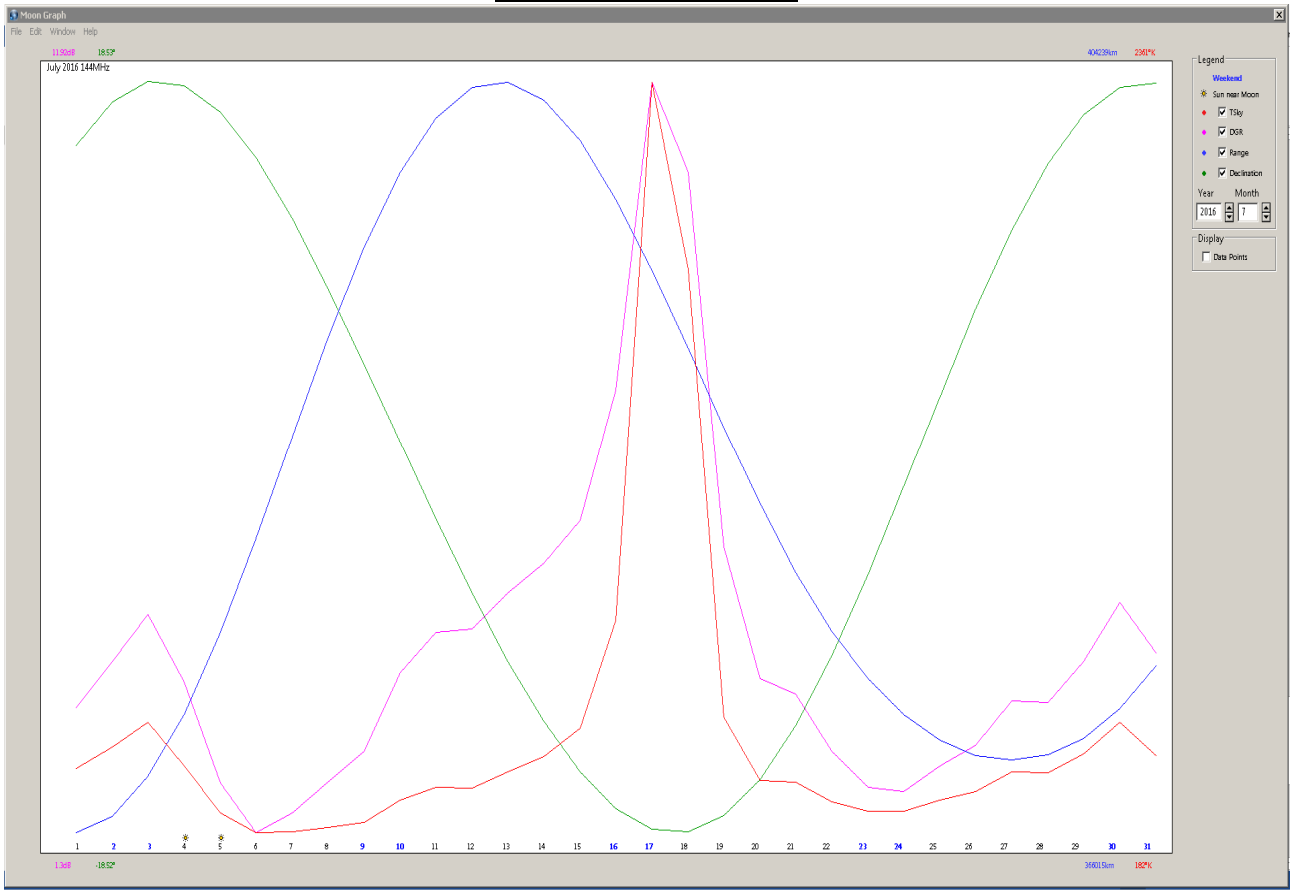
For a permission to make commercial use please send a written request to BerndDF2ZC@gmail.com

Latest DXpedition Info:
www.mmmonvhf.de

Moon Graph June 2016:



Moon Graph July 2016:



(Courtesy of David GM4JJJ (www.gm4jjj.co.uk/MoonSked/moonsked.htm))