

The 144 MHz EME NewsLetter

©DF2ZC

www.df2zc.de



Issue 8/2009 29 Aug 2009

C37DXU – 225 EME Contacts from Andorra

It is a wellknown fact that the JT65 mode has become the general EME mode on 144 MHz for some years now. However, so far there never was any moon bounce activity from Andorra in that mode. Therefore that DXCC is very much sought after, particularly by those who do not have sufficient powerful equipment to work that country in CW EME.



Pau EA3BB with the 4 x 13 group at C37DXU's QTH (Picture: EA3BB)

So Pau EA3BB contacted the president of the Andorra Ham Radio Association to assist him and a group of fellow hams to get permission to work 2m EME from that DXCC. They were successful and the callsign C37DXU was granted, in remembrance of Pau's brother Josep, the very much missed EA3DXU, who passed away in October 2007. The group also received permission to work JT65 EME on 70 cm using that callsign.

The equipment consisted of a group 4 x 13 ele 3.25 wl yagis (19,3 dBd altogether) and a linear amp with two 4CX250Bs, homemade by EA3DXU in K2RIW design. TX was a Kenwood TS790 , RX an Icom IC-910H.



The famous red dxpedition bus at a stunning landscape (Picture: EA3BB)

On 21 July 2009 the group left for the DXpedition QTH at the Camp de la Rabasa, in the Naturland park, at 1600 m asl (locator JN02SK). After a quick set-up everything was "ready to go" on 22 July when at 0628 UTC the first 2m QSO was made. Another 224 complete contacts followed until breaking everything down on 25 July at 1912 UTC. 39 different DXCCs were worked, and 6 continents. A huge success – Josep sure would have been very happy.

On youtube there are three videos of that activity:

<http://www.youtube.com/watch?v=jdPT6XNC7bY>

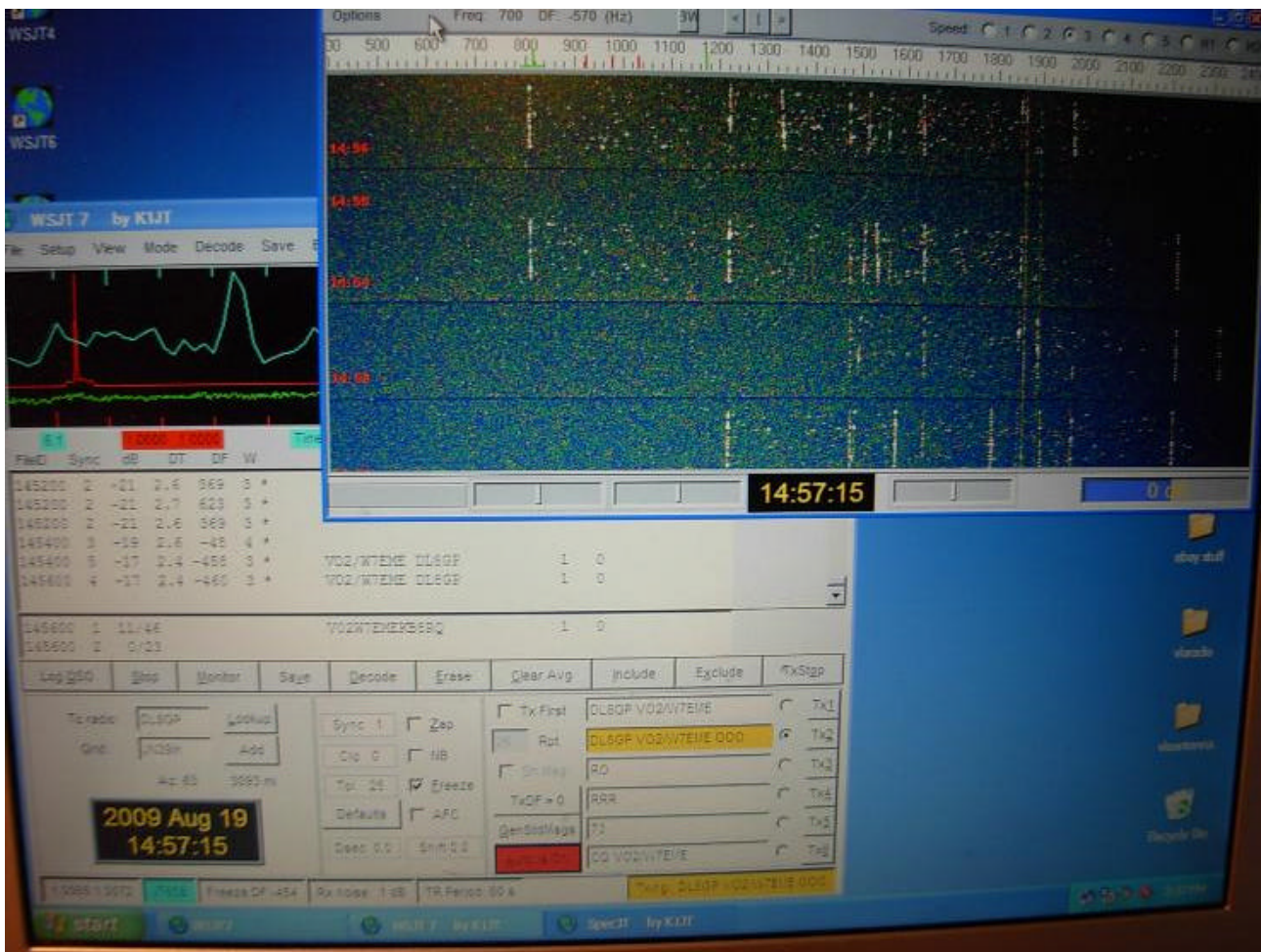
<http://www.youtube.com/watch?v=GCqJO0sZdq0>

<http://www.youtube.com/watch?v=oaelpSVLWjQ>

ITU Zone 2 Activated by W7EME

Jeremy, W7EME, travelled to VO2 land in August to activate the much wanted ITU zone 2 on EME. Equipment used was a single yagi and a fair amount of power. In hindsight it was very lucky that he could start his activity one day ahead of schedule, on 19 August. On that day VO2/W7EME completed 13 QSOs. The following day things were not as good as before but still he completed 14 contacts.

Then came bad wx: Very strong storms made it impossible for Jeremy to become QRV the following days. Therefore many hams (including the DF2ZC) waited in vain for his signal to pop up. Nothing has been heard of Jeremy since; however he got back home safe and sound - and hopefully will repeat this activity some day. However, for the near future he has different plans (please see next page).



Pile up at VO2/W7EME (Picture: W7EME)

Though it is perfectly explained in the WSJT Manual many hams had a problem to configure their software properly to deal with the VO2 prefix which is not stored in the program itself. By far too often VO2/W7EME copied only truncated callsigns so no QSO was possible then. Jeremy complains he could have made many more QSOs...and he is very much right.

Upcoming DXpeditions

(For latest news on current and future dxpeditions check <http://www.mmmonvhf.de>)

Thailand activated by HSOZIL (DL2LAH) - maybe

Karsten DL2LAH will be back in Thailand (OK16BQ) again in from 9 to 24 October 2009. However, since this is not a classic DXpedition and Karsten will have many different things to do while being on site, there is a chance though he finds some time for 2m EME.

Straight after arrival he will start to build the second 10 ele DK7ZB and try to be ready than with 2 x 10 ele vertical. For 2010 an upgrade to 4 x 10 ele DK7ZB is planned. Please keep watching the various web loggers and www.mmmonvhf.de for updates on his activity status. There is no need to hurry and nobody can loose out: Karsten will be QRV from Thailand more often, maybe semi-permanent in some years.

First Ever EME Activity from Mongolia

Jeremy W7EME and Jim K7YO will be QRV from Mongolia (ON37KW) from 10 to 14 October 2009. W7EME will operate JT65B on 144 MHz, K7YO will take care of 432 MHz. Equipment on 2 meters will be a single M2 2m x p32 antenna and 450 watts output. (same equipment as used at VO2/W7EME).

The operation will take place at the JT1KAA headquarters and from the Ersine sum mountains east of the capital Ulan-Batoor. Callsigns used will be JT1UN and JT1UN/5. For further information and updates, please visit www.w7eme.org/ulaanbaatar and www.gsl.net/k7yo and of course www.mmmonvhf.de

Software

Stellarium – A Planetarium on your PC

Though it is not exactly related to EME but since many EME hams also are interested in General space and the star-sky this software might be very helpful: Stellarium is a free open source planetarium for your computer. It shows a realistic sky, just like what you see with the naked eye, binoculars or a telescope. It is being used in planetarium projectors. You can just set your coordinates and go.

This freeware is for download at <http://www.stellarium.org/> As it still is a 0.-version (currently 0.10.2) there might still be some bugs in it. For example it looks like it does not work with all kinds of graphics cards – on one of my three machines it only displays an error code and exits. But have a try...it is great fun (Honours for finding this nice software go to Frank DH7FB).

The 144 MHz EME NewsLetter

is produced monthly. Copyright is by Bernd J. Mischlewski, DF2ZC.

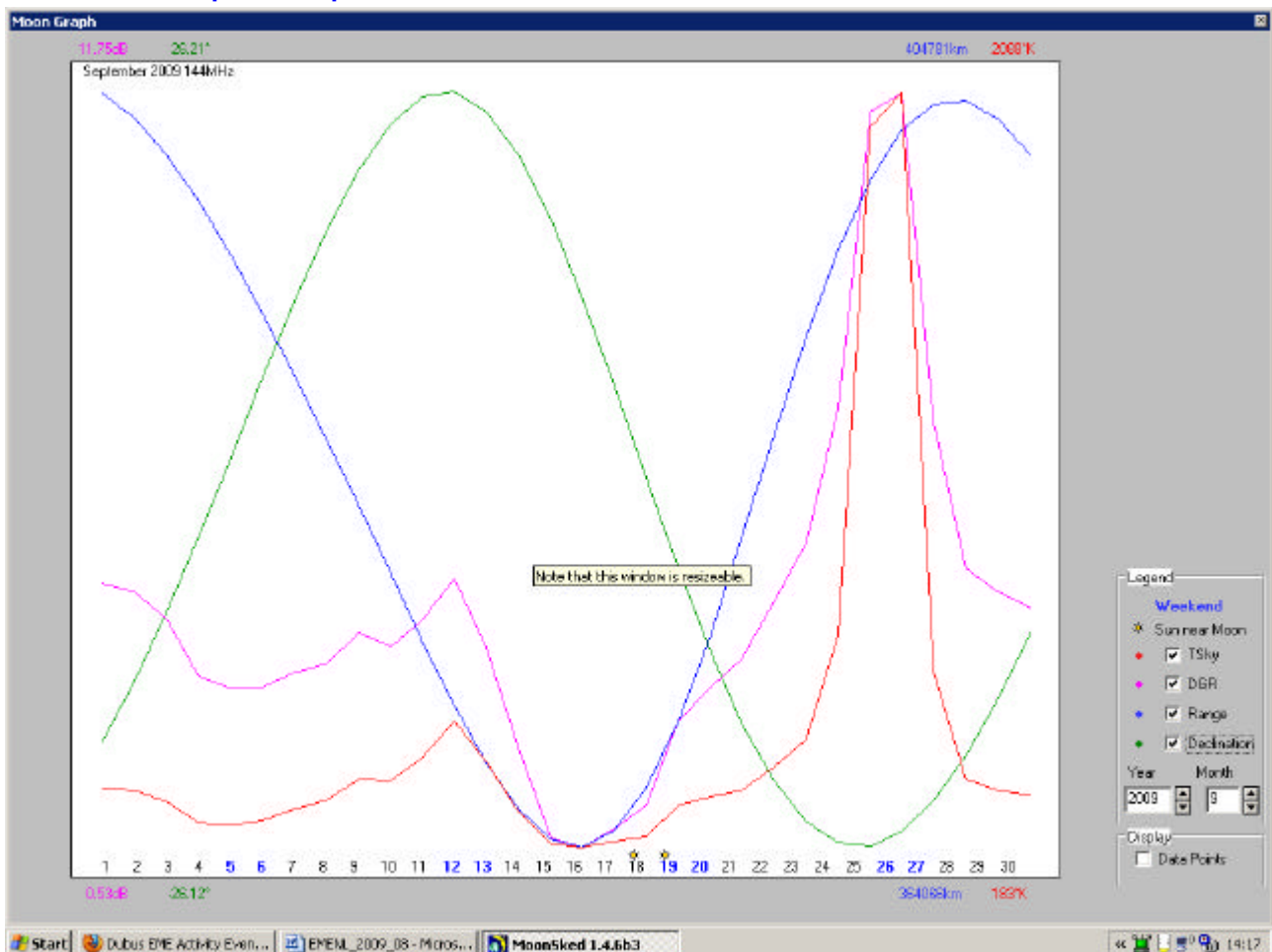
Permission to quote or reprint material from the newsletter is granted under the condition that it is only for non-commercial, personal use.

For a permission to make commercial use send a written request to DF2ZC@email.de

Time Table

12/13 Sep 2009	ARI EME Contest (CW/SSB)
28 Sep 2009	September Issue of the 144 MHz EME NewsLetter ready for download at www.df2zc.de/newsletter
10/11 Oct 2009	ARRL EME Contest
5/6 Dec 2009	ARRL EME Contest

Moon Graph September 2009



(Courtesy of David GM4JJJ (www.gm4jjj.co.uk/MoonSked/moonsked.htm))