

The 144 MHz EME NewsLetter

©DF2ZC

www.df2zc.de



Issue 3/2009 25 Mar 2009

Results of 30th ARRL International EME Contest

Jeremy W7EME reports that the results of the 30th ARRL International EME Competition 2008 are now online on <http://www.arrl.org/contests/results/2008/EME/>

The results show a total of 140 entrants and 7 check logs. Of the total, nearly 90% of the entries are Single-Operator with entries in almost all of the different categories. The remaining entries are in the Multi-Operator categories. However, the total of 140 submitted logs in 2008 is down from the previous year's competition of 183 entries. The reported total of completed QSOs was also down in comparison to the 2007 event, with just over 8500 QSOs in 2008 compared to 10100 in 2007. Single-Operator entries totalled 124 of all entries and the remaining 16 entries were the Multi-Op and commercial facility stations.

The winners in the 144 MHz categories are:

144 MHz, Analog	LA8YB
144 MHz, Digital	HA0HO
144 MHz, Mixed Mode	RA6DA
144 MHz, Mixed Mode, Assisted	RU1AA

There is no decision yet on the dates of the 2009 ARRL EME competition.

[Upcoming DXpeditions](#)

(For latest news on current and future DXpeditions check <http://www.mmmonvhf.de>)

H44HP (QI90, RI00, RI01)

Not just upcoming but in progress for many weeks already is Hermann DL2NUD's activity from Australia and Oceania. He has ceased operations from H40 and moved on to the Solomon Islands now. Local problems prevented more success from H40 since he could only work at elevations > 30°. Though, he completed QSOs with DL9MS -18, DF7KF -20, PE1L -21, PA0ZH -24, DL8YHR -22, VK2KU -25, ZL3TY -26, JH0MHE -19, KB8RQ -21, W7MEM -27, K6MYC -17, AA7A -24, K7XQ -24, W5UN -23, RU3GX -21, OH7PI -24, UA3PTW -29, SM5CUI -24, RW6HM -21, SP2OFW -16, OZ1LPR -14, ES6RQ -16, JR3REX -15, DK3WG -23, UA4AQL -18, RA6AX -12, PA2CHR -15, RN6BN -11, DF2ZC -21, DL8EBW -26, PA1GYS -22, DK3BU -18, SM5DIC -22,

DL7FF -26, HB9Q -24, RA6DA -17, RW3WR -20, HA0DU -20, RK3FG -14, SP3VSC -19, DK5YA -22, RX1AS -21, DL7FF -23, S54T -23, DL8GP -22, HA0HO -21, HA6NQ -21, DM1CG -24, IK1UWL -24, DL1DWI -24, PA0JMV -25, DJ8MS -26, JH5FOQ -24, I2RV -24, WA4NJP -24, N7SC -23, AA4SC -23, JM1GSH -24, VK3AXH -18, RU1AA -15, ES3RF -22, JS3CTQ -28, JE1TNL -25, RZ4HF -18, OH6UW -26, JH2COZ -18, DF1AN -22, DL0DBR -17, OZ4VV -21, YU7XL -24, YU7AA -19, DH3YAK -25, DK5LA -28, OK1CU -23, HA5CW -26, SV8CS -27, DJ3VI -22, DK1CO -26, G4ZPJ -23, RU1AC -27, I1ANP -26, K2BLA -25, K1OR -22, K9MRI -18, WA3QPX -17, KL7UW -24, VK2KU -24, UA4HAK -24, SM2A -18, OH2LHE -20, UT6UG -18, OH3KLJ -21, YU1IO -18, YU1EV -17, OM3BC -21, OK1UGA -15, DK3EE -14, PA3CEE -22, IK7EZN -24, ON7UC -23, ON7EH -24, F6HVK -26DB, JM1WBB -16, RV9UV -21, ZL1RS -23, JH8CMZ -24, JO1LVZ -27 and again ES6RQ -18/-29dB.

On the Solomon Islands Hermann still suffered from bad luck: After first tests past weekend and still heavy tropical rain storms he decided to stop operation at QI90XH until the weekend 28th/29th March. (maybe even 27th or 28th if the local weather situation permits. Furthermore he still plans to transfer also to the RI grids. Starting on Monday March 30th he might be QRV for some four days from RI01AD and maybe later (start of April) from RI00AN until latest 6th or 7th April. However, this all is on the condition that the local weather situation is supportive and therefore subject to change. So let's hope for the best.

If Hermann can be QRV he will CQ (H44HP always 1st) on 144,144 MHz. As long as there's moon in Japan he will work tx/rx on 144,088 MHz.

E51EME QRV now from Rarotonga

Bob ZL1RS and Lance W7GJ will be QRV as E51EME and E51SIX via EME on 2m and 6m from Rarotonga (BG08DR) (South Cook Islands). Their planned stay lasts from 26th March to 4th April 2009. 2m equipment will be 4 x 5 elements DK7ZB and 600 watts out. Luckily the holiday house location has an excellent takeoff over Muri lagoon to their moonrise, promising interesting ground gain effects. Sadly...their moon-set is somewhat blocked due to the hills in that direction.

Lance has already been reported on 26th March being QRV on 6m so everything seems to look o.k. over there. Latest (2m) news are on Bob's website <http://www.qsl.net/zl1rs/>

5NOEME: Nigeria QRV on EME!

Bodo DL3OCH who will be on QRL in Nigeria for a couple of months has arrived safe and sound at his place in JJ38QX. So has the equipment. He is currently assembling his station and will start EME operations on 2m on March 28th. Bodo plans to be QRV from about 1200 to 1800 UTC that day. The following Sunday he plans to work from 0900 to 1900 UTC.

The frequency will be announced only after first rx tests, 5NOEME will always tx 1st. Equipment is single 12 elements yagi and about 1 kW out.

5Z4EME: Kenya on EME!

Rene PE1L, Eltje PA3CEE and Ronald PA3EWP are leaving for Kenya on March 30th. If everything goes according to schedule they should be QRV on April 1st. TX frequency is 144,124 MHz and 5Z4EME always tx 1st. RX frequencies are 144,124 MHz **AND** 144,084 MHz during JA window (with a second receiver). On 144.084 priority will be given to Japanese stations. Usually 5Z4EME (locator KI79MO) won't transmit 73s to reply RRRs and go to the next station or call CQ. They will give priority to callers who have a record of dxpeditions or another contribution to moonbounce or to this expedition.

René has some tips to makes it more easy for them to work you: "Please call us when you DO copy us. DON'T stop calling us when we are in QSO with someone else (after a QSO we can only call another station if he was transmitting that sequence before). From time to time we have to turn antennas (by hand); then we have to stop txing for 1 or 2 periods. However, please continue calling. Condx will be vy good April 3-5, so don't wait until the end of the expedition to call us! After April 6th it's possible we are sometimes away for safari."

Equipment is some 700 watts out and two 10 elements xpols. More info should be on their [dxpedition website](http://www.emelogger.com/)
<http://www.emelogger.com/>

ISO/DH7FB & ISO/DF2ZC (JN40TJ)

It is only a month now until Frank and Bernd will become QRV on EME from Sardinia. All equipment is prepared and ready to get stored in the car: TS2000, 2 x 9 ele M2 and 2 x GU74b by LZ2US (only running at a fraction of the max output). Since the ferry will arrive in Olbia, Sardinia around 0430 UTC on May 1st they might become QRV only some time in the afternoon of that day. The local topography in the Eastern part of the island will make it impossible to work until moon-set. However given the high declination during their stay all Americans should have a fair chance to work that DXCC.

ISO/DH7FB's working frequencies are tx 144,124 MHz and rx 144,082 MHz as long as there is moon in Japan (JA/VK/ZL will have priority in the pile-up then) and tx/rx 144,124 MHz after moon set in Japan. ISO is always 1st. So please check if JA has moon to know where to call. Of course Frank and Bernd will always listen +/- 1 kHz. To gain time ISO will not transmit 73s after receipt of 73 and go straight to the next callsign but they expect all partners to send one sequence 73s after receipt of RRRs from ISO.

If local GPRS coverage permits they will run an online log on <http://www.mmmonvhf.de/showblog.php?ca=ISO-DH7FB>

The 144 MHz EME NewsLetter

is produced monthly. Copyright is by Bernd J. Mischlewski, DF2ZC.

Permission to quote or reprint material from the newsletter is granted under the condition that it is only for non-commercial, personal use.

For a permission to make commercial use send a written request to DF2ZC@email.de

Time Table

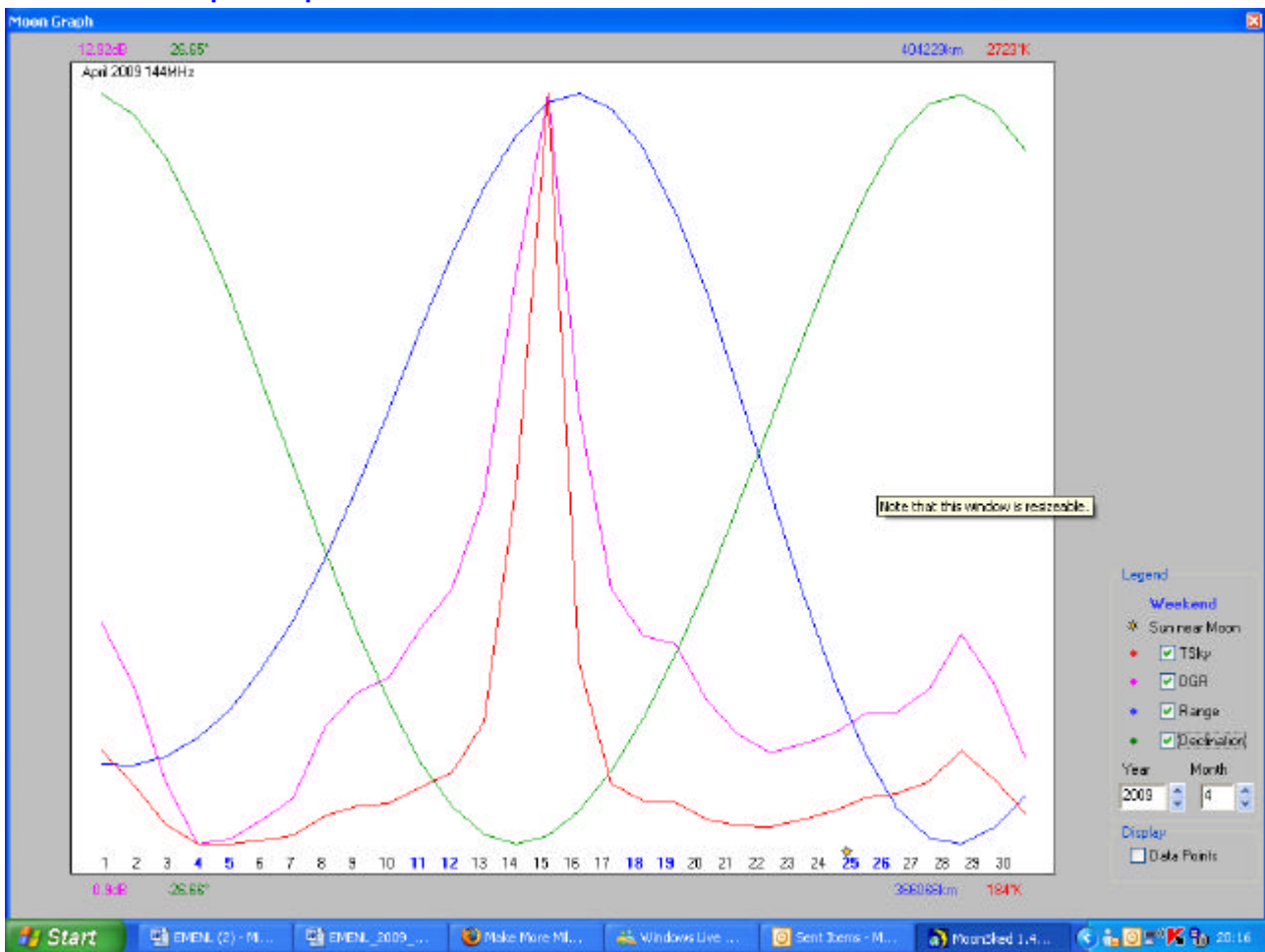
28/29 March 2009
0000-2400 Z

DUBUS CW EME Contest
(Rules www.marsport.org.uk/dubus/EUEMEcontest2009.pdf)

20 April 2009

April Issue of the 144 MHz EME NewsLetter
ready for download at www.df2zc.de/newsletter

Moon Graph April 2009



(Courtesy of David GM4JJJ (www.gm4jjj.co.uk/MoonSked/moonsked.htm))